



# Blue Kingdom



Scan QR code for more info

Yanbu

## Al Taweel

Top Dive Time

**45-60** Min

Distance

KM From

Skills

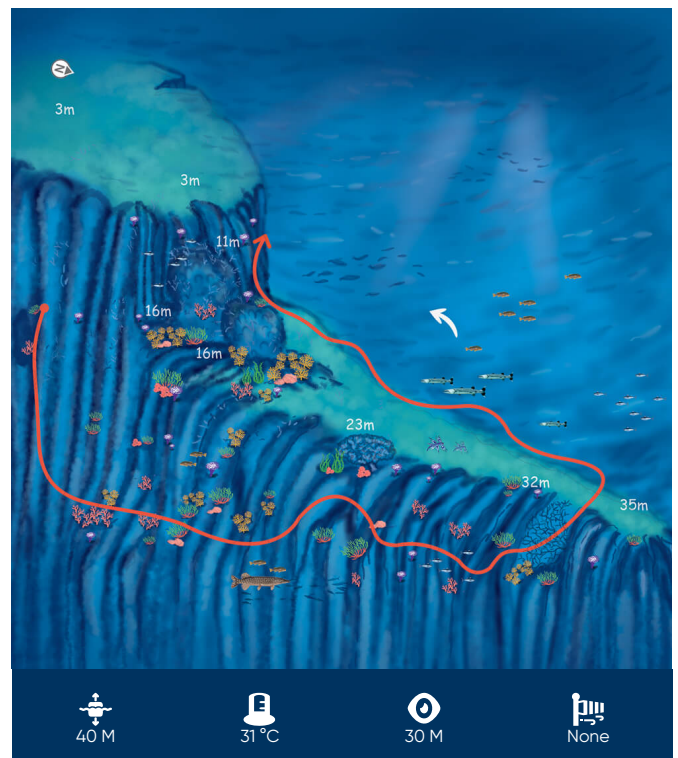
Advanced Technical Free Diving

In the crystal-clear waters of the Red Sea lies one of the most sought-after dive sites in the region: Al Taweel. This stunning dive site offers a vibrant ecosystem of marine life, breathtaking topography and crystal-clear waters.

As you descend into the depths of the Red Sea, you'll be greeted by a stunning wall that descends to 50m and beyond. The mild current here allows you to fully appreciate the stunning topography without worrying about being swept away. The wall is covered in a colourful array of hard and soft corals, providing a home to an abundance of marine life.

As you explore the reef, you'll encounter a diverse ecosystem of marine life, such as jackfish, sweetlips, barracuda and nudibranchs. The reef is in excellent condition, with a healthy ecosystem of coral and marine life that is a testament to the region's thriving biodiversity.

One of the highlights of Al Taweel can be found in its northwest corner. Here, an amazing reef awaits, with a wonderful coral head just 7m away from the corner. Descending further, you'll discover a breathtaking coral garden saddle that starts at 22m and extends all the way to 36m. The saddle drops down to 45m, where another saddle takes you d .....



40 M

31 °C

30 M

None

Coordinates  
23°50'20"N  
37°54'8"E

Entry  
-  
-

Exit  
-  
-

Coast Guard

994

Ambulance

997