

# Blue Kingdom



Scan QR code for more info

## Al Lith Marmar Island

Top Dive Time

**45-60** Min

Distance

KM From

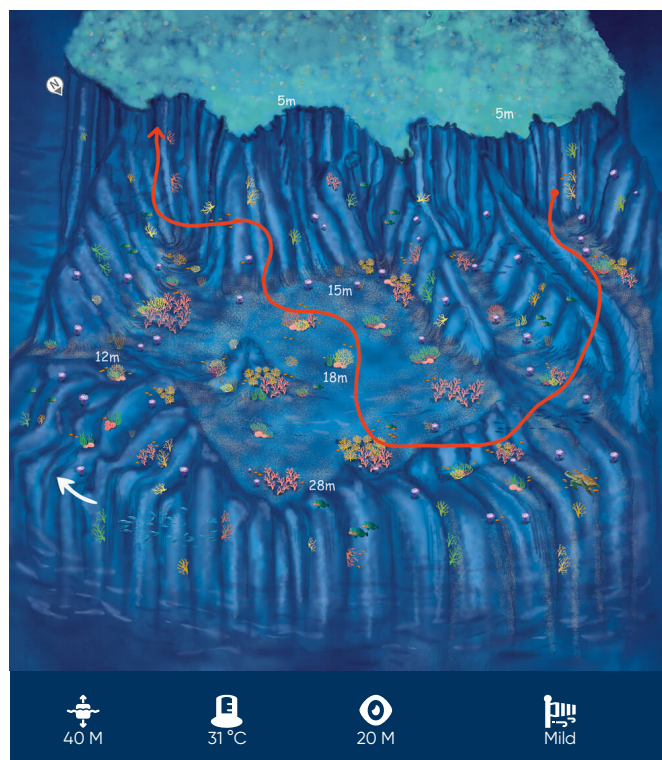
Skills

All Levels

This dive takes you to an underwater paradise of vibrantly coloured coral gardens. The route traverses a shelf that gradually slopes down to a depth of 28m and is bordered by steep drop offs into the ocean depths.

Beginning alongside the top of the reef, this dive kicks off with a 15m descent across a few valleys and peaks until arriving at a plateau that marks the route's midway point. The platform is wide, with two large rock clusters covered in a patchwork of hard and soft coral erupting from its surface. The colours are dazzling, with deep purples, vibrant pinks and burnt oranges taking centre stage. Soft yellow finger leather coral beckon to divers with tendrils swaying gently in the mild current, while fan-shaped Acropora coral anchored beg for inspection. These impressive stony corals provide a hiding place for the smaller reef fish that are prey for the larger predators attracted to this feeding ground.

As you glide over the sandy floor – exploring the nooks and crannies between the rocks – you'll be struck by the abundance of marine life that call this subterranean paradise home. Shoals of colorful fish including the ever-present anthias dart around you, while less confident reef fish .....



Coordinates  
19°50'48"N  
39°56'12"E

Entry

-  
-

Exit

-  
-

Coast Guard

994

Ambulance

997