



Blue Kingdom



Scan QR code for more info

Red Sea Global Turfat Alwaqadi

Top Dive Time

30-60 Min

Distance

16 KM From Al Harrah Coast Guard
Approx 30-45 minutes by boat

Skills

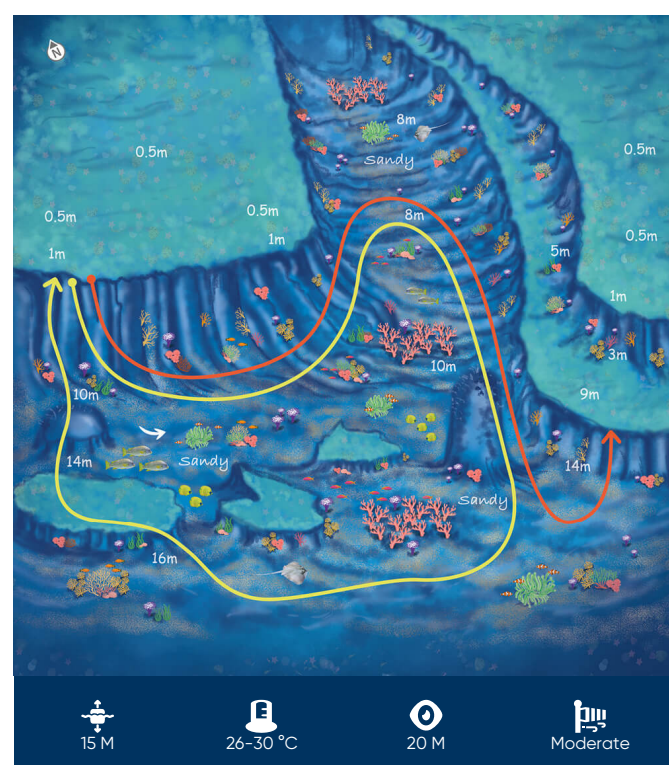
Beginners Advanced Snorkellers Free Diving

A gently sloped wall and a sandy seabed make Turfat Alwaqadi ideal for beginners. Divers have the choice of two routes here, both with a nonexistent to mild current, great visibility and a dive time of 30-60 minutes. It's an easy dive, but it's hardly dull.

The coral formations and crevices are home to diverse marine life, such as Red Sea anemonefish, blackspotted sweetlips, masked butterflyfish and anthias, as well as the moray eels that lurk between the narrowest passages. There are also active nesting beaches for hawksbill turtles, as well as some green turtles, on the nearby island.

One of the highlights of this dive is the effortless swim through a shallow channel, which dips to 8-10m. Here, tube sponges and brilliant purple finger coral shelter a variety of creatures, allowing you to get up close and personal with reef inhabitants. When the sunlight filters through, it's especially enchanting. Keep an eye out for the vividly coloured bluespotted ribbontail rays.

Watching anthias is a clever way to tell which way the current is flowing. The fish will swim against the current to feast on zooplankton drifting past. Any changes in the currents



Coordinates	Entry	Exit
25°17'33"N	-	-
36°57'27"E	-	-

Coast Guard	994
Ambulance	997