



Blue Kingdom



Scan QR code for more info

Umluj Al Saflani

Top Dive Time

45-60 Min

Distance

20 KM From Ash Shab'an Coast Guard
Approx 55-70 minutes by boat

Skills

Advanced Technical Free Diving

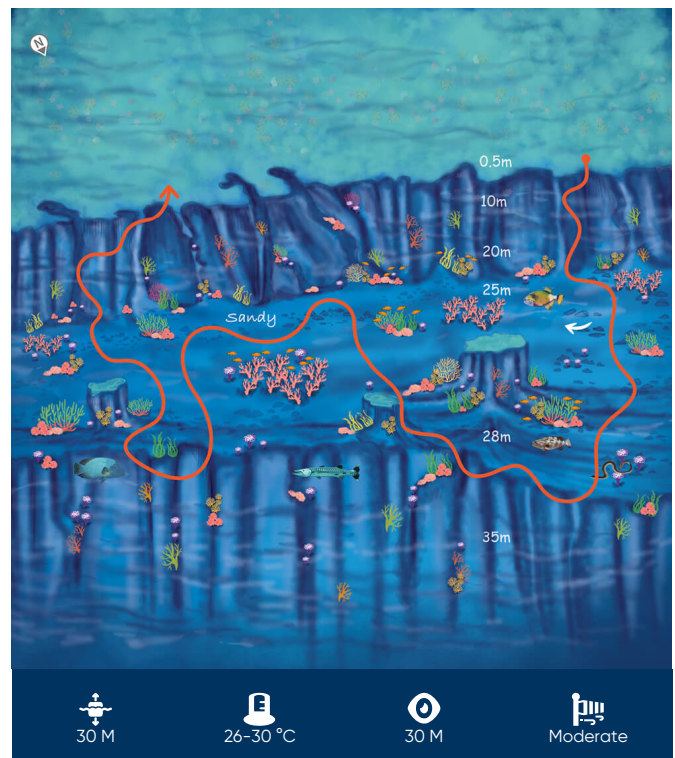
Not far from Abu Sudain, the waters of Al Saflani reveal two dive sites descending far deeper than 30m. The first site traverses a sloping reef wall full of coral formations. The reef wall leads to a sandy plateau at 22m before continuing over a drop-off wall to more than 30m. The second site explores another reef wall before landing on a sandy platform at 25m and then descending a drop off wall to 60m. Due to the depths of this site, it is recommended that only advanced divers embark on this journey.

The predominant soft and hard coral formations at this site are fire corals and stony corals. Stony corals, capable of building a reef in water as deep as 40m, come in a multitude of colours, shapes and sizes. The coral serves as a refuge for fish like the giant humphead wrasse and as a source of nutrition for species like the triggerfish.

Moray eels can also be found lurking among the coral reefs, waiting to pounce on unknowing fish that swim too close. Furthermore, it is quite common to see large numbers of barracuda and groupers swimming among the coral.

Due to increased pressure, divers must remain diligent when descending on their dive. The deeper one goes,

.....



Coordinates
24°45'60"N
37°5'23"E

Entry
-
-

Exit
-
-

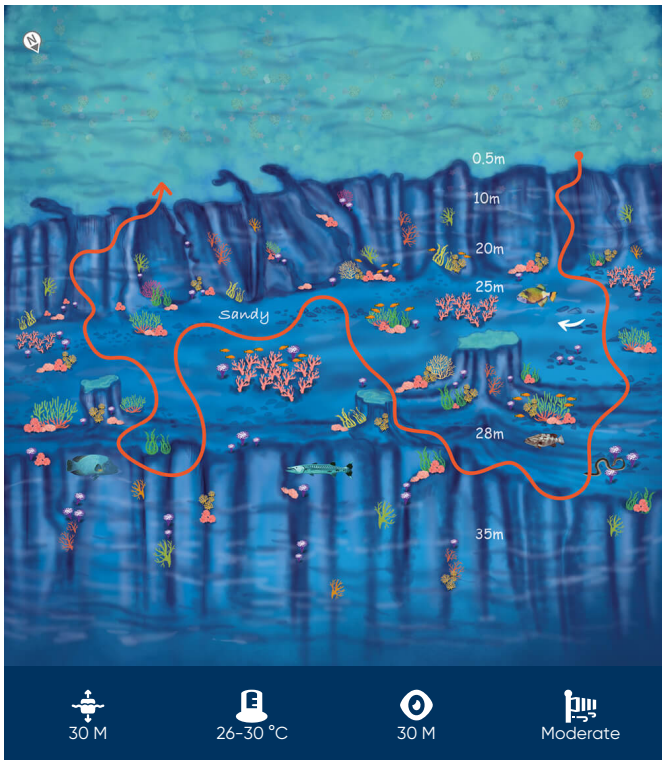
Coast Guard

994

Ambulance

997

Site 1



Site 2

